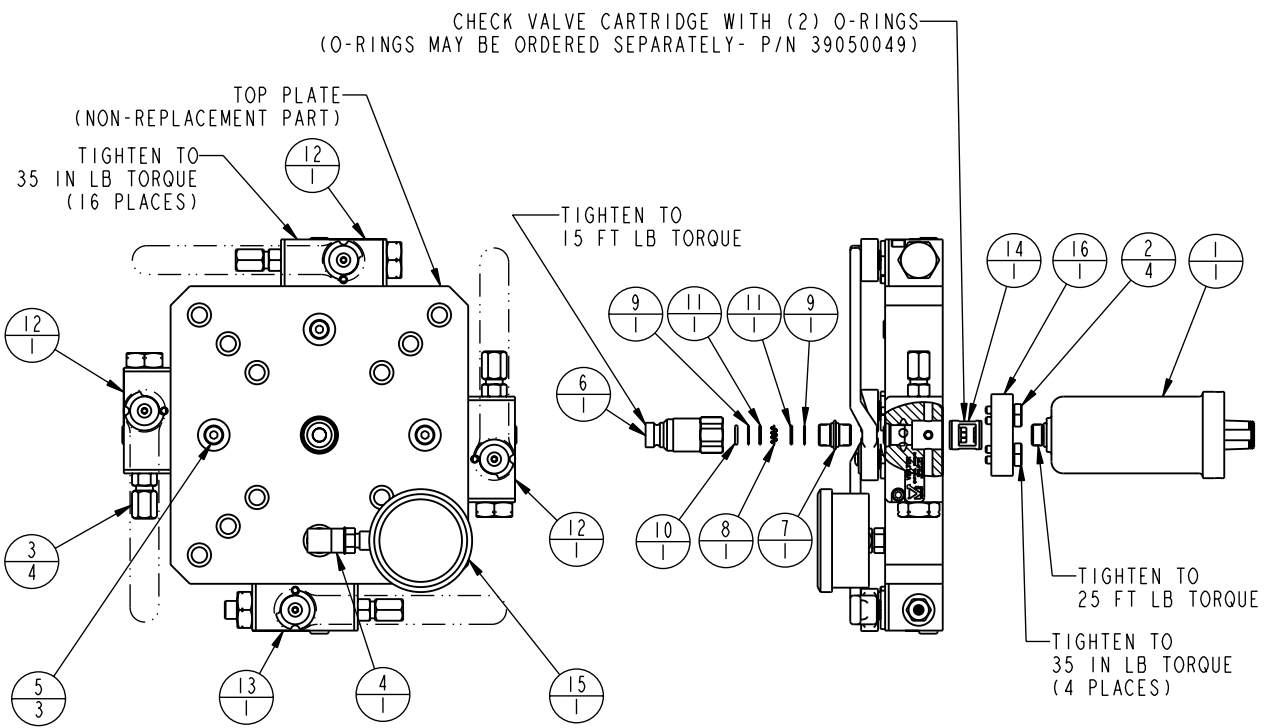


MODEL NO.			MODEL NAME	
56000301			ASSY, TOP PLATE, FOUR SIDED, 1500 PSI	
NO.	QTY	PART NO.	DESCRIPTION	FILTER KIT
1	1	10101601	ASSY, ACC, 3.2 CU IN, 1500 PSIG	NO
2	4	21411012	SCREW, CAP, SOCH, 10-32 X 3/4, ALLOY	NO
3	4	30000144	CONNECTOR, 1/4 FLRL TBG - SAE 4	NO
4	1	30162144	ELBOW, 90°, SAE 4 MALE - SAE 4 FEM	NO
5	3	30601144	PLUG, SOCH, SAE 4	NO
6	1	30772760	COUPLER, QD, SAE 6, MALE, FLUSH	NO
7	1	30871166	ASSY, ADAPTER, SAE 6, MALE	NO
8	1	31050011	FILTER, DISC, SAE 6, 25 MICRON	YES
9	2	31050013	DIFFUSER, DISK, SAE 6	YES
10	1	39002009	O-RING	YES
11	2	39054010	RING, BU, (-012)	YES
12	3	70101700	ASSY, VALVE, UNLOAD	NO
13	1	70101703	ASSY, VALVE, UNLOAD, BLEEDER	NO
14	1	70343791	VALVE, CHECK, SLIP-IN, 1/2	NO
15	1	72212162	GAUGE, PRESS, HYDR, 10000 PSI	NO
16	1	85600301	PLATE, MOUNTING	NO
N/A	N/A	62560004	KIT, FILTER, TP, SAE 6, 25 MICRON	NOTED
N/A	N/A	1S5604	INSTRUCTION SHEET	N/A



APPLY LUBRICANT TO ALL SEALS PRIOR TO INSTALLATION  
DO NOT USE SILICONE TYPE LUBRICANTS.

### PARTS LIST



VEKTEK, INC.  
1334 E. SIXTH AVE. P.O. BOX 625  
EMPORIA, KS. 66801 U.S.A.

ASSEMBLIES AFFECTED  
56000301

PARTS LIST, ASSY, TOP PLATE, FOUR SIDED, 1500 PSI

M	2039	RELEASE	K. ROEMER	04/17/09
REV	IN ACCORDANCE WITH ECN	EFFECTIVE DATE	REVISED BY	DATE
DRW BY:	BUSH	DRAWING STATUS: <b>Released</b>		
DATE:	2-3-95	PRODUCTION APPROVED FOR RELEASED STATUS ONLY		

SIZE	PL5605	REV	M
A			

FORM FEG035\_PL\_ASIZE, REV. A

SHEET 1 OF 1

<b>Vektek, Inc.</b> 1334 East Sixth Ave. P.O. Box 625 Emporia, Ks. 66801 U.S.A.	<b>Instruction Sheet</b>	<b>IS-</b>	<b>5604</b>	
		<b>REV:</b>	<b>A I.A.W. ECN 1352</b>	
		<b>BY/DATE:</b>	<b>M Say</b>	<b>08/01/05</b>
		<b>APPR/DATE:</b>	<b>R. Hausler</b>	<b>10-4-05</b>
<b>Title Operating Instructions: Two and Four Sided Top Plate Assemblies</b>				

**Read all instructions before operating**

1. Shut off the power supply and release any pressure on the output line.
2. Close all valves on the top plate.
3. Connect the power supply to the top plate, through the quick disconnect coupling.
4. Open the valve on the fixture where the part will be changed out. Change out the part and close the valve.
5. Pressurize the fixture by holding the pendant rocker switch in the clamp position. After the system is pressurized, release the switch.
6. Rotate the tombstone to the next fixture to be loaded.
7. Repeat steps four, five and six until all fixtures are reloaded.
8. Disconnect the power supply from the tombstone.

**NOTE:**

Tombstone fixtures may be loaded or unloaded independently, without loss of pressure to adjacent fixtures.